

# All you knit is love

strikkdegglad.blogspot.com

## Little Miracle



**Knitting tension:** 42 sts pattern = 10 cm  
on needle size 2.5 mm.

**Materials:** 60 g (50 g = ca 180 m)

**Size:** premature

1. St row in patterns A and B is WS!

### *Abbreviations*

- k = knit
- p = purl
- st(s) = stitches
- RS = right side
- WS = wrong side
- YO = yarn over

### *Back piece*

Cast on 50 sts (includes 1 edge st each side). Work 9 rows rib, k2/p2. Knit one row. At the same time, increase 8 sts evenly distributed. Work pattern A. (Edge sts is not marked in pattern, k on every row.)

The pattern is the sole property of Anne Småbrekke, and may be printed for personal, non-commercial use only. Any other use must be approved in writing by the author.

When piece measures 9 cm bind off 5 sts each side for armhole. Continue to work pattern A until piece measures 16 cm. From RS: p 10 sts, bind off 28 sts, p 10 sts. Work 3 rows on the remaining sts on each side. Bind off.

**Left front**

CO 28 sts (includes 1 edge st each side). Work 9 rows rib, k2/p2. Knit one row. Work pattern A (Edge sts is not marked in pattern, k on every row.)

When piece measures 9 cm bind off 5 sts each side for armhole. Continue to work pattern A until piece measures 15 cm. Bind off to shape the neckline on every row starting from neckline as follows: 8 sts 1 time, 2 sts 2 times and 1 st 1 time. Bind off when piece measure is equal to back piece.

**Right front**

As left front, but mirrored

**Sleeves**

CO 26 sts (includes 1 edge st each side) Work 9 rows rib, k2/p2. Knit one row. At the same time, increase 6 sts evenly distributed. Work pattern B until full length (Edge sts is not marked in pattern, k on every row.) At the same time when piece measure 5 cm increase 1 st in each side within 1 st. Repeat the increase every 6 row 4 times.

**Left front band**

Pick up sts along left front piece and work 9 rows rib, k2/p2. Bind off.

**Right front band**

Like left front band, but after 4 rows make 4 buttonholes evenly distributed. 1 buttonhole = K2 tog and make 1 YO. Place the top buttonhole approx 0,5 cm from neckline, and the bottom one approx 1 cm from bottom edge.

**Neckline**

Start on the left front band and pick up sts around the neckline. Work 5 rows rib, k2/p2. Bind of loosely.




**Assembly**

Sew sleeve and side seams inside 1 edge st. Iron steam piece carefully.

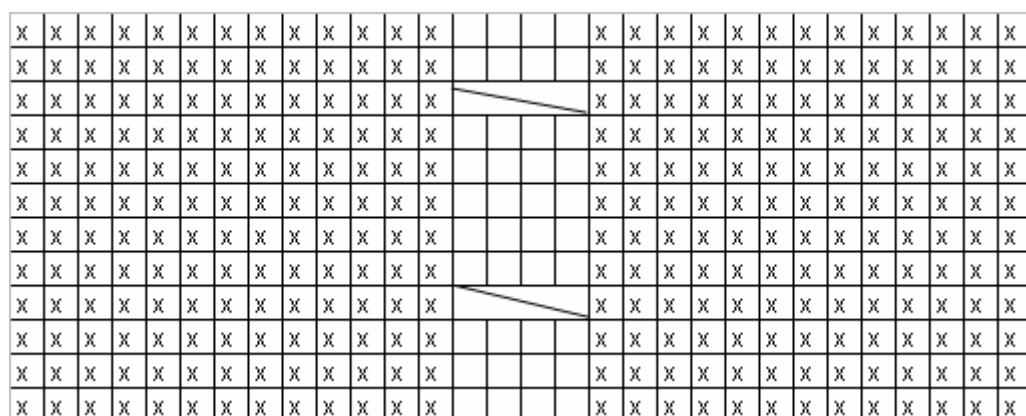
**Pattern A**

X	X	X	X	X	X					X	X	X	X	X	X
X	X	X	X	X	X					X	X	X	X	X	X
X	X	X	X	X	X					X	X	X	X	X	X
X	X	X	X	X	X					X	X	X	X	X	X
X	X	X	X	X	X					X	X	X	X	X	X
X	X	X	X	X	X					X	X	X	X	X	X
X	X	X	X	X	X					X	X	X	X	X	X
X	X	X	X	X	X					X	X	X	X	X	X
X	X	X	X	X	X					X	X	X	X	X	X
X	X	X	X	X	X					X	X	X	X	X	X
X	X	X	X	X	X					X	X	X	X	X	X
X	X	X	X	X	X					X	X	X	X	X	X
X	X	X	X	X	X					X	X	X	X	X	X
X	X	X	X	X	X					X	X	X	X	X	X

**Explanation patterns A and B**

-  Knit on RS, purl on WS
-  Purl on RS, knit on WS
-  slip 2 sts on cable needle in front of piece, K2, K2 from cable needle

## Pattern B



The pattern is the sole property of Anne Småbrekke, and may be printed for personal, non-commercial use only. Any other use must be approved in writing by the author.